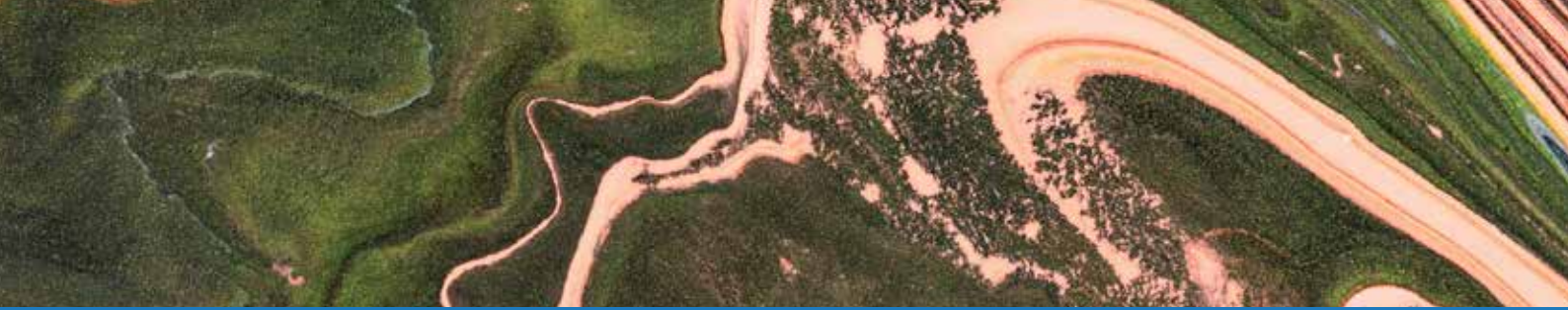




# ENGINEERING Services





# Who we are

Based in Melbourne we have over 28 years of Architectural and engineering design experience. Servicing Australia wide E2E Design Group, provides its clients with an end to end service through a variety of design solutions for your next property development project.

Our services consist of Town Planning, Architectural building design, construction project management, geotechnical, structural, surveying, forensic, civil, and remedial works. We pride ourselves on excellent rapport within the industry and offer competitive rates, fast response and turnaround times.

With everything we design, manage and implement at E2E Design Group, we always make sure that we work with our customer in mind, we respect their objective and we commit ourselves to get the job done. Complimented by our business integrity, we are accountable to our promise to deliver every job with the utmost quality and efficiency.

# Mission

Committed to providing a modernised and progressive approach to our clients by delivering a responsive, safe and trusted end to end project solution.



Dedicated to revolutionising construction management & engineering practices.

# Vision

# Values

Quality | Accountability | Integrity | Respect



Driven by our business **integrity**, we are committed and **accountable** to your end result, by **respecting** your objective and delivering your job with absolute **quality**.

# Get to know us



## Adrian Brincat

**Director**  
B.Eng (Civil), RBP  
MIEAust

*There is no elevator to success, you must take the stairs*  
*Zig Ziglar*

Adrian is a highly engaged and experienced Engineering Manager with over a decade of expertise in the construction industry. Currently overseeing the Geo-Technical, Surveying, and Forensic teams, he has demonstrated exceptional leadership in managing diverse engineering projects. Adrian's proficiency extends to the development and implementation of effective business development strategies aimed at enhancing operational efficiency within his teams. Armed with a Bachelor of Engineering (B.Eng) with a focus on Civil Engineering from Victoria University, Adrian's knowledge base is solid and well-rounded. His commitment to motivating and guiding his staff plays a pivotal role in achieving organizational goals, fostering a collaborative and efficient work environment. Adrian's managerial approach ensures the smooth progress of projects under his purview, reflecting his dedication to excellence in the field of engineering.

**Director**  
B.Eng (Hons), M.Eng (Dist), RBP,  
MIEAust, MBDPS, MEWB

## Jordan Trist

*One day or day one, It's your decision*

*Paulo Coelho*

Jordan is an accomplished Structural Engineering leader with a proven track record in the civil engineering industry. With a robust background in construction engineering, Analytics, structural engineering, and expertise in timber, steel, and concrete structures, Jordan brings a comprehensive skill set to the table. His proficiency in managing diverse aspects of engineering projects reflects a deep understanding of the intricacies involved. Armed with a Master of Engineering (M.Eng) focused on structures and forensics from RMIT University, Jordan is well-versed in the theoretical and practical aspects of



engineering. Currently at the helm, he efficiently manages the Structural and Civil Design teams, showcasing strong operational acumen. Jordan's commitment to excellence is evident in his ability to navigate the complexities of structural engineering projects while ensuring the success and cohesion of his teams.

## Tony Kirk

**Director**  
B.Eng (Hons), RPEQ,  
RBP (Eng, Arch Design),

*If you fail to plan, you are planning to fail*

*Benjamin Franklin*



Tony's background as a designer, engineer and registered builder suggests that he has a holistic understanding of the construction process. This allows him to effortlessly blend design concepts and engineering principles, incorporating a builder's perspective, thereby ensuring the creation of efficient and structurally sound projects. Tony's focus on "Buildable" designs indicates that he prioritises practicality and affordability ensuring that designs can be implemented effectively. As a registered professional in multiple categories and states, Tony is committed to adhering to legal and regulatory requirements. This dedication to compliance helps mitigate risks and ensures that projects are executed in accordance with industry standards and regulations.

# Other Services

**Centralising all the design work in one place offering value and quality every step of the way.**

E2E Design Group provides offer a streamlined service with in-house staff prepared to deliver the fastest time frames while maintaining quality standards. This allows our customers to reduce their wait times and save money.

We will kick-off your project with high quality documentation and liaise with Municipal Councils to satisfy planning requirements.

Whether it be residential, commercial or industrial structures. E2E Design Group assures to deliver maximum value, quality and efficiency every time.



## Design Services

- Town Planning
- Fire Services
- Water Sensitive Urban Design
- Landscaping Plan
- Geotechnical Services
- Surveying
- Authorities Applications (Property Information, Legal point of Discharge, Title, Plan of Subdivisions, Pressure and flow information)
- Arborist Report



## Application Lodgment & Post Permit Services

We can manage and support your planning application through the town planning process.

- Coordination and management of planning permit conditions.
- Permit amendments and plan endorsement.
- VCAT advocacy services for both applicants and objectors.

# Forensic Engineering

## Forensic Engineering – Experts in their field.

Our experienced forensic engineers are experts in their field, recognised for their ability to provide innovative solutions and solve complex project matters.

As well as providing conventional solutions, our expert team offers innovative resolutions to the problem at hand.

Rest assured that E2E Design Group will give you the advice you need so your project can meet your performance objectives.

### Investigation & Reporting for Distressed Buildings

In the event of building distress, structural failure and/or general structural safety concerns, E2E Design Group has a dedicated team of specialist engineers who can provide a comprehensive assessment and expert analysis of the issues at hand. We also provide specialised site and laboratory testing to support our investigation findings. Our team of expert engineers can develop innovative and cost-effective solutions to extend the service life of a building, or when a change of use is required.

### Expert Witness & Dispute Resolutions

In addition to VCAT and County Court expert services, we can attend dispute hearings on our clients' behalf and deliver statements pertaining to the cause. We can also conduct site inspections to identify areas of non-compliance during the construction phase and in the event of structural failures. In the case where a building has been constructed without the appropriate permits and/or approvals, we can work with your building surveyor to identify a scope of work that may allow the retrospective issue of a building permit.



# Structural Engineering

## Structural Engineering –Adding value to your engineering project.

E2E Design Group provides structural design and analysis in conjunction with CAD software to create easy-to-interpret documentation.

We take the time to engage with you and your key stakeholders to ensure that our designs meet your expectations.

Whether it be residential, commercial or industrial structures. E2E Design Group assures to deliver maximum value, quality and efficiency every time.



### Commercial & Industrial Projects

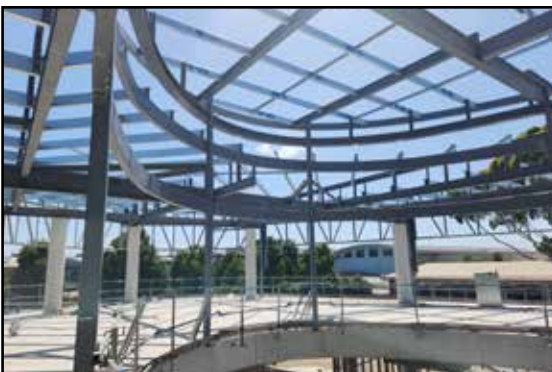
E2E Design Group has extensive experience in the commercial and industrial construction sectors. Our approach is collaborative and flexible, and we respond quickly to our clients' needs by leveraging the broad knowledge and talent of our diverse team. At E2E Design Group, we pride ourselves on leading the industry in client collaboration and communication to ensure our clients know exactly how their project is progressing.



We go above and beyond to ensure our clients have peace of mind and ultimate project success. We do this by conducting independent expert assessments on major projects with other leading industry experts. We ensure our team is up to date with the latest innovative design concepts through our relationships with leading industry affiliates.

### Residential Projects

From small renovations and individual dwellings to multi-unit and multistorey developments, E2E Design Group is committed to keeping up to date with the latest construction techniques and materials to ensure your project is delivered with a competitive edge.



One of our core areas of expertise is providing clients with design options to deal with abnormal moisture and problematic ground conditions, while still ensuring an economical design solution.



# Civil Engineering

## Sustainable and reliable Civil design project solutions

Our understanding of the complex requirements and environmental challenges of your civil design project allows us to provide a unique and economical solution that satisfies the relevant authorities.

We have developed relationships with industry-leading manufacturers to ensure our designs and specifications are achieving best practice.

Our experienced civil engineers work closely with council during the planning phase to ensure your development complies with the principles and requirements of the relevant planning schemes.



### Drainage & Pavement Design

E2E Design Group is proud to be at the forefront of environmentally sustainable design, which goes hand-in-hand with water sensitive urban design (WSUD). WSUD is a land planning and engineering design approach that integrates the urban water cycle, including stormwater, groundwater, wastewater management and water supply, into urban design to minimise environmental degradation and improve aesthetic and recreational appeal.

We work closely with the responsible authorities to provide a seamless solution for your project. We also provides integrated drainage and pavement designs, giving a holistic solution for your development.

### Land Development

Our civil land development team provides fast, efficient and dynamic design solutions that minimise bulk excavations and site fill to maximise the land use and overall profitability of your development. Our 3D modelling capabilities enable the construction team to access accurate volume reports when estimating project costs

### Retaining Walls

By adopting a range of techniques, E2E Design Group can provide a variety of retaining wall solutions to optimise the usable space of your project.

# Building Services

## Providing Innovative & Cost-Effective Solutions in Multi-Residential, Commercial, Industrial, and Mixed-Use Developments,

Our experienced forensic engineers are experts in their field, recognised for their ability to provide innovative solutions and solve complex project matters.

By providing conventional solutions, our expert team offers innovative resolutions to the problem at hand, giving the client sound knowledge and advice for their next project to meet all performance objectives.

### Fire Services

Our Fire Services team collaborates with Building Surveyors and Fire Safety Engineers to provide specialized solutions, including smoke alarms, dry and wet fire systems, and essential safety equipment. We ensure compliance with AS/NZ Standards, delivering advanced fire protection for every project.

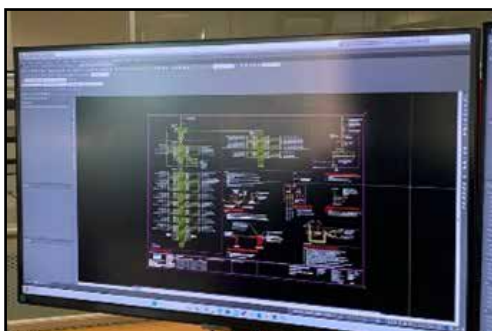


### Hydraulics Services

Our Hydraulics Services team provides expert solutions for water and drainage systems, including plumbing, sewage, and stormwater management. We deliver efficient, compliant, and sustainable designs tailored to your project needs, ensuring optimal performance and reliability.

### Mechanical Services

Our Mechanical Services team specializes in designing air-conditioning, heating, ventilation, and plumbing systems. We provide efficient, high-performance solutions that enhance comfort, air quality, and energy efficiency, ensuring your building meets the highest standards.



### Electrical Services

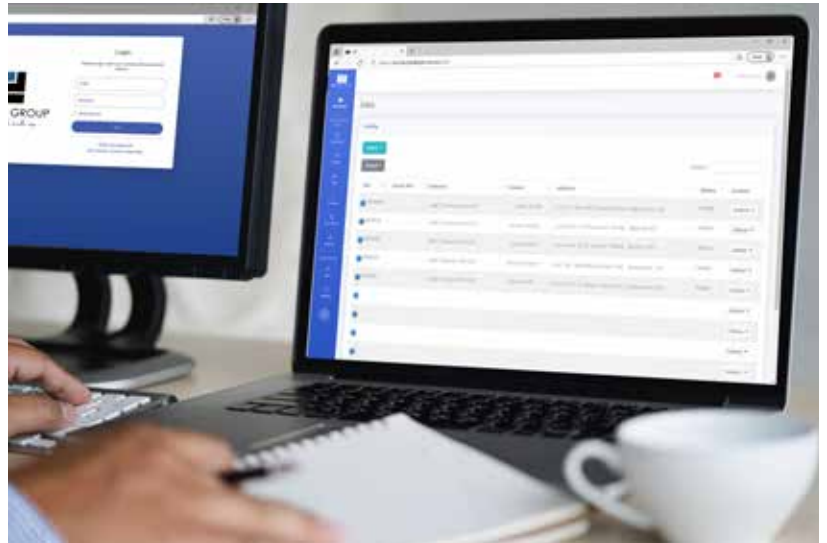
Our Electrical Services team provides comprehensive solutions, including lighting, dry fire systems, power distribution, communications, security, and building automation. Working closely with our ESD Consultant, we optimize energy use and offer in-house solar design services for integrated, efficient results.

# Job Management

Together with Synco Technologies Pty Ltd we offer a collaborative web portal that will deliver the best value proposition to our customers. Offering an efficient system that assists and promotes transparency within your projects.

The job portal will not only allow you to request quotes and book jobs in, It will allow effortless communication between your team and our designers on a job by job basis.

This gives you the ability to see the current status of your job at anytime and eliminates tiresome emails and phone calls.



## Client Portal

Our portal will bring productivity and harmony with in your projects. By visiting **[www.e2edesign.com.au](http://www.e2edesign.com.au)** you can access your own company portal by creating a one time account. Here you will be given the tools to log in jobs, request quotes on new projects, communicate between staff and engineers on a job by job basis. You can view billing information, download drawings, permits and all other relative documents associated to that project. The portal has been designed with the client in mind to reduce time and midigate risk between job communication and documentation handling.

- Easy Quoting and Booking Process
- Accept Quotes with one click!
- Direct line of communication with E2E Staff Involved in each project
- Dashboard with all your current Projects.
- Download and upload files within seconds.
- Project status: See job progress.
- Ability to invoice 3rd Parties directly.
- 24/7 access.



# Contact Us



**ADRIAN  
BRINCAT**  
Director



■ Geotechnical, Surveying  
& Forensic Services

☎ 03 9465 1191

✉ [adrian.brincat@e2edesign.com.au](mailto:adrian.brincat@e2edesign.com.au)

🌐 [e2edesign.com.au](http://e2edesign.com.au)



**JORDAN  
TRIST**  
Director



■ Structural & Civil Design Services

☎ 03 9465 1191

✉ [jordan.trist@e2edesign.com.au](mailto:jordan.trist@e2edesign.com.au)

🌐 [e2edesign.com.au](http://e2edesign.com.au)



**TONY  
KIRK**  
Director



■ Building Design &  
Town Planning Services

☎ 03 9465 1191

✉ [tony.kirk@e2edesign.com.au](mailto:tony.kirk@e2edesign.com.au)

🌐 [e2edesign.com.au](http://e2edesign.com.au)

■ Other Contacts

**Sales / Client Relationship Manager**

✉ [rosana.dias@e2edesign.com.au](mailto:rosana.dias@e2edesign.com.au)  
☎ 0493 881 311

**Accounts department**

✉ [accounts@e2edesign.com.au](mailto:accounts@e2edesign.com.au)  
03 9465 1010

**Main Line**

✉ [admin@e2edesign.com.au](mailto:admin@e2edesign.com.au)  
☎ 03 9465 1191